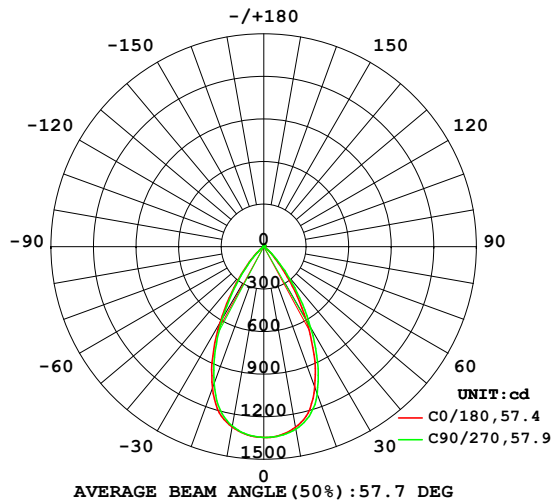


LUMINAIRE PHOTOMETRIC TEST REPORT

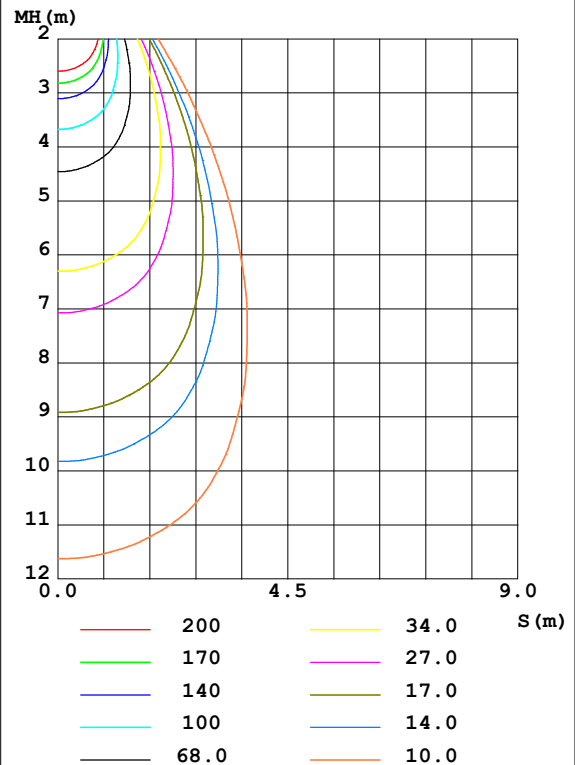
NAME: TLO020-31-CCT	TYPE: 57.7D	WEIGHT: 1
SPEC.: 3500K CRI90	DIM.:	SERIAL No.:
MFR.:	SUR.: 65	Shielding Angle:

DATA OF LAMP		PHOTOMETRIC DATA				Eff: 64.08 lm/W
MODEL		I _{max} (cd)	1346	S/MH (C0/180)	0.87	
NOMINAL POWER (W)	20	LOR (%)	100.0	S/MH (C90/270)	0.85	
RATED VOLTAGE (V)	120	TOTAL FLUX (lm)	1235.3	η UP, DN (C0-180)	1.2, 50.9	
NOMINAL FLUX (lm)	1235.33	CIE CLASS	DIRECT	η UP, DN (C180-360)	1.2, 46.7	
LAMPS INSIDE	1	η up (%)	2.4	CIBSE SHR NOM	0.75	
TEST VOLTAGE (V)	120	η down (%)	97.6	CIBSE SHR MAX	0.90	

LUMINOUS INTENSITY DISTRIBUTION DIAGRAM



C0 PLANE ISOLUX DIAGRAM (UNIT: lx)



C Range: 0 - 360DEG
C Interval: 22.5DEG
Test Speed: HIGH
Temperature: 28DEG
Operators: CJY
Test Date: 2024-08-30

γ Range: 0 - 180DEG
γ Interval: 1.0DEG
Test System: EVERFINE GO-2000B_V1 SYSTEM V2.0.401
Humidity: 65.0%
Test Distance: 5.190m [K=1.0000]
Remarks:

ZONAL FLUX DIAGRAM

ZONAL FLUX DIAGRAM:

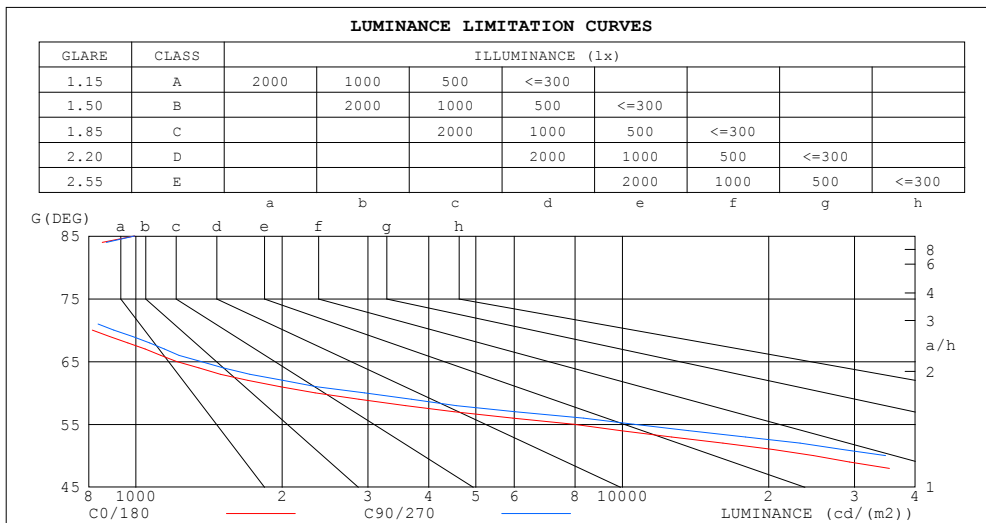
γ	C0	C45	C90	C135	C180	C225	C270	C315	γ	Φ zone	Φ total	%lum, lamp
10	1293	1301	1306	1308	1291	1288	1284	1279	0- 10	126.0	126.0	10.2,10.2
20	1052	1081	1102	1120	1061	1063	1027	1016	10- 20	337.1	463.1	37.5,37.5
30	601.8	625.6	667.4	677.2	616.2	606.8	582.3	556.5	20- 30	386.1	849.2	68.7,68.7
40	210.1	224.5	255.1	264.2	223.5	221.9	206.2	183.0	30- 40	250.0	1099	89,89
50	40.37	45.11	57.05	57.88	45.70	44.24	38.28	32.02	40- 50	89.95	1189	96.3,96.3
60	2.967	2.956	3.764	4.469	3.530	3.087	2.409	2.324	50- 60	14.66	1204	97.5,97.5
70	0.7072	0.7154	0.7858	0.8564	0.7315	0.6959	0.5827	0.5376	60- 70	1.495	1205	97.6,97.6
80	0.2553	0.2449	0.2610	0.2748	0.2023	0.2006	0.1812	0.1749	70- 80	0.4174	1206	97.6,97.6
90	0.2265	0.2139	0.2144	0.2127	0.1914	0.1875	0.1990	0.1950	80- 90	0.2200	1206	97.6,97.6
100	0.4352	0.4340	0.4041	0.3784	0.3611	0.3709	0.4138	0.4236	90-100	0.3015	1206	97.6,97.6
110	1.200	1.179	1.106	1.027	1.009	1.066	1.175	1.215	100-110	0.7362	1207	97.7,97.7
120	2.923	2.882	2.729	2.609	2.583	2.706	2.896	2.964	110-120	1.839	1209	97.9,97.9
130	5.613	5.541	5.336	5.166	5.226	5.378	5.627	5.708	120-130	3.604	1212	98.1,98.1
140	8.787	8.685	8.492	8.307	8.425	8.558	8.794	8.849	130-140	5.392	1218	98.6,98.6
150	11.62	11.59	11.47	11.35	11.35	11.50	11.64	11.59	140-150	6.317	1224	99.1,99.1
160	13.35	13.42	13.53	13.33	13.29	13.39	13.55	13.27	150-160	5.775	1230	99.6,99.6
170	14.59	14.61	14.80	14.65	14.67	14.73	14.74	14.51	160-170	3.961	1234	99.9,99.9
180	15.59	15.72	15.70	15.69	15.62	15.73	15.73	15.71	170-180	1.437	1235	100,100
DEG	LUMINOUS INTENSITY:cd									UNIT:lm		

C Range: 0 - 360DEG
C Interval: 22.5DEG
Test Speed: HIGH
Temperature:28DEG
Operators:CJY
Test Date:2024-08-30

γ Range: 0 - 180DEG
 γ Interval: 1.0DEG
Test System:EVERFINE GO-2000B_V1 SYSTEM V2.0.401
Humidity:65.0%
Test Distance:5.190m [K=1.0000]
Remarks:

LUMINANCE LIMITATION CURVES

NAME: TLO020-31-CCT	TYPE: 57.7D	WEIGHT: 1
SPEC.: 3500K CRI90	DIM.:	SERIAL No.:
MFR.:	SUR.: 65	Shielding Angle:



LUMINANCE cd/(m2)		
G (DEG)	C0/180	C90/270
85	994	994
80	579	589
75	577	623
70	814	900
65	1213	1361
60	2336	2950
55	7935	10558
50	24730	34777
45	55828	71083

C Range: 0 - 360DEG
 C Interval: 22.5DEG
 Test Speed: HIGH
 Temperature: 28DEG
 Operators: CJY
 Test Date: 2024-08-30

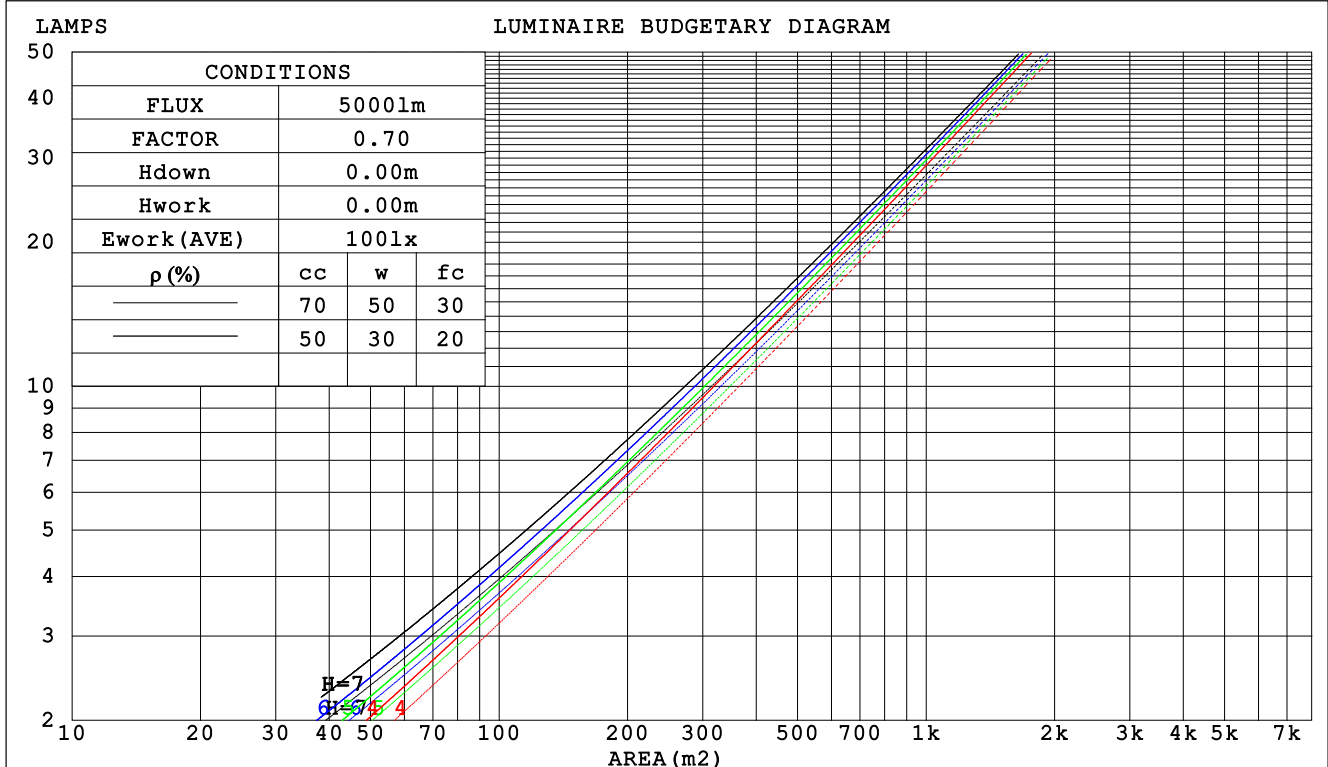
γ Range: 0 - 180DEG
 γ Interval: 1.0DEG
 Test System: EVERFINE GO-2000B_V1 SYSTEM V2.0.401
 Humidity: 65.0%
 Test Distance: 5.190m [K=1.0000]
 Remarks:

TLO020-31-CCT 36V600mA TX-1825SW14A-2860V36-02H90 57.7D 3500K CRI90 N2

CU AND LUMINAIRE BUDGETARY ESTIMATE DIAGRAM

NAME: TLO020-31-CCT	TYPE:57.7D	WEIGHT:1
SPEC.:3500K CRI90	DIM.:	SERIAL No.:
MFR.:	SUR.:65	Shielding Angle:

ρ_{cc}	80%			70%			50%			30%			10%			0
ρ_w	50%	30%	10%	50%	30%	10%	50%	30%	10%	50%	30%	10%	50%	30%	10%	0
ρ_{fc}	20%			20%			20%			20%			20%			0
RCR	RCR:Room Cavity Ratio						Coefficients of Utilization(CU)									
0.0	1.18	1.18	1.18	1.15	1.15	1.15	1.10	1.10	1.10	1.05	1.05	1.05	.00	.00	.00	.98
1.0	1.10	1.08	1.05	1.08	1.05	1.03	1.03	1.01	.00	.99	.98	.96	.95	.94	.93	.91
2.0	1.02	.98	.95	1.00	.97	.94	.97	.94	.91	.93	.91	.89	.90	.88	.87	.85
3.0	.95	.90	.86	.94	.89	.85	.91	.87	.84	.88	.85	.82	.85	.83	.81	.79
4.0	.89	.83	.79	.88	.82	.78	.85	.81	.77	.83	.79	.76	.81	.78	.75	.73
5.0	.83	.77	.73	.82	.76	.72	.80	.75	.72	.78	.74	.71	.76	.73	.70	.68
6.0	.78	.72	.67	.77	.71	.67	.75	.70	.67	.74	.69	.66	.72	.68	.65	.64
7.0	.73	.67	.63	.72	.67	.63	.71	.66	.62	.69	.65	.62	.68	.64	.61	.60
8.0	.69	.63	.59	.68	.62	.58	.67	.62	.58	.66	.61	.58	.64	.60	.57	.56
9.0	.65	.59	.55	.64	.59	.55	.63	.58	.54	.62	.57	.54	.61	.57	.54	.52
10.0	.61	.55	.52	.61	.55	.51	.60	.55	.51	.59	.54	.51	.58	.54	.51	.49



C Range: 0 - 360DEG
C Interval: 22.5DEG
Test Speed: HIGH
Temperature:28DEG
Operators:CJY
Test Date:2024-08-30

γ Range: 0 - 180DEG
 γ Interval: 1.0DEG
 γ Test System:EVERFINE GO-2000B_V1 SYSTEM V2.0.401
Humidity:65.0%
Test Distance:5.190m [K=1.0000]
Remarks:

TLO020-31-CCT 36V600mA TX-1825SW14A-2860V36-02H90 57.7D 3500K CRI90 N2

WEC AND CCEC

NAME: TLO020-31-CCT	TYPE:57.7D	WEIGHT:1
SPEC.:3500K CRI90	DIM.:	SERIAL No.:
MFR.:	SUR.:65	Shielding Angle:

pcc	80%			70%			50%			30%			10%			0	
pw	50%	30%	10%	50%	30%	10%	50%	30%	10%	50%	30%	10%	50%	30%	10%	0	
pfc	20%			20%			20%			20%			20%			0	
RCR	RCR:Room Cavity Ratio						Wall Exitance Coefficients (WEC)										
0.0																	
1.0	.180	.102	.032	.172	.098	.031	.158	.091	.029	.146	.084	.027	.134	.078	.025		
2.0	.173	.095	.029	.166	.092	.028	.154	.086	.027	.143	.080	.025	.133	.075	.024		
3.0	.165	.088	.026	.159	.085	.026	.149	.081	.025	.139	.076	.023	.131	.072	.022		
4.0	.157	.082	.024	.152	.080	.024	.143	.076	.023	.135	.072	.022	.127	.069	.021		
5.0	.150	.076	.022	.146	.075	.022	.138	.072	.021	.130	.069	.020	.124	.066	.020		
6.0	.143	.072	.021	.139	.070	.020	.132	.068	.020	.126	.065	.019	.120	.063	.019		
7.0	.137	.068	.019	.133	.066	.019	.127	.064	.019	.121	.062	.018	.116	.060	.018		
8.0	.131	.064	.018	.128	.063	.018	.122	.061	.017	.117	.059	.017	.112	.057	.017		
9.0	.125	.061	.017	.123	.060	.017	.118	.058	.016	.113	.057	.016	.108	.055	.016		
10.0	.120	.058	.016	.118	.057	.016	.113	.055	.016	.109	.054	.015	.105	.053	.015		

pcc	80%			70%			50%			30%			10%			0
pw	50%	30%	10%	50%	30%	10%	50%	30%	10%	50%	30%	10%	50%	30%	10%	0
pfc	20%			20%			20%			20%			20%			0
RCR	RCR:Room Cavity Ratio						Ceiling Cavity Exitance Coefficients(CCEC)									
0.0	.209	.209	.209	.178	.178	.178	.122	.122	.122	.070	.070	.070	.022	.022	.022	
1.0	.190	.176	.163	.162	.151	.140	.111	.104	.097	.064	.060	.056	.020	.019	.018	
2.0	.175	.151	.131	.150	.130	.113	.103	.090	.079	.059	.052	.046	.019	.017	.015	
3.0	.163	.132	.108	.139	.114	.093	.096	.079	.065	.055	.046	.039	.018	.015	.013	
4.0	.153	.117	.091	.131	.102	.079	.090	.071	.055	.052	.041	.033	.017	.013	.011	
5.0	.144	.106	.078	.124	.092	.068	.085	.064	.048	.049	.038	.028	.016	.012	.009	
6.0	.137	.097	.068	.118	.084	.059	.081	.059	.042	.047	.035	.025	.015	.011	.008	
7.0	.131	.089	.060	.112	.077	.053	.078	.054	.037	.045	.032	.022	.015	.010	.007	
8.0	.125	.083	.054	.108	.072	.047	.075	.051	.034	.043	.030	.020	.014	.010	.007	
9.0	.120	.078	.050	.103	.068	.043	.072	.048	.031	.042	.028	.018	.014	.009	.006	
10.0	.116	.074	.046	.100	.064	.040	.069	.045	.028	.040	.027	.017	.013	.009	.006	

C Range: 0 - 360DEG
C Interval: 22.5DEG
Test Speed: HIGH
Temperature:28DEG
Operators:CJY
Test Date:2024-08-30

γ Range: 0 - 180DEG
γ Interval: 1.0DEG
Test System:EVERFINE GO-2000B_V1 SYSTEM V2.0.401
Humidity:65.0%
Test Distance:5.190m [K=1.0000]
Remarks:

TLO020-31-CCT 36V600mA TX-1825SW14A-2860V36-02H90 57.7D 3500K CRI90 NA

UGR(Unified Glare Rating) Table

NAME: TLO020-31-CCT					TYPE:57.7D			WEIGHT:1			
SPEC.:3500K CRI90					DIM.:			SERIAL No.:			
MFR.:					SUR.:65			Shielding Angle:			
ceiling/cavity	0.7	0.7	0.5	0.5	0.3	0.7	0.7	0.5	0.5	0.3	
walls	0.5	0.3	0.5	0.3	0.3	0.5	0.3	0.5	0.3	0.3	
working plane	0.2	0.2	0.2	0.2	0.2	0.2	0.2	0.2	0.2	0.2	
Room dimensions		Viewed crosswise					Viewed endwise				
x = 2H y = 2H	2H	21.3	22.3	21.6	22.5	22.7	22.0	23.0	22.3	23.2	23.4
	3H	21.1	22.0	21.4	22.2	22.5	21.9	22.7	22.2	23.0	23.2
	4H	21.0	21.9	21.4	22.1	22.4	21.8	22.6	22.1	22.8	23.1
	6H	21.0	21.7	21.3	22.0	22.3	21.7	22.4	22.0	22.7	23.0
	8H	20.9	21.6	21.3	21.9	22.2	21.6	22.4	22.0	22.7	23.0
	12H	20.9	21.6	21.2	21.9	22.2	21.6	22.3	21.9	22.6	22.9
4H	2H	21.1	21.9	21.4	22.1	22.4	21.8	22.6	22.1	22.8	23.1
	3H	20.9	21.6	21.2	21.9	22.2	21.6	22.3	21.9	22.6	22.9
	4H	20.8	21.4	21.2	21.7	22.1	21.5	22.1	21.9	22.5	22.8
	6H	20.7	21.2	21.1	21.6	22.0	21.4	21.9	21.8	22.3	22.7
	8H	20.6	21.1	21.0	21.5	21.9	21.3	21.8	21.8	22.2	22.6
	12H	20.6	21.0	21.0	21.4	21.9	21.3	21.7	21.7	22.2	22.6
8H	4H	20.6	21.1	21.0	21.5	21.9	21.3	21.8	21.8	22.2	22.6
	6H	20.5	20.9	21.0	21.4	21.8	21.2	21.6	21.7	22.1	22.5
	8H	20.4	20.8	20.9	21.3	21.8	21.2	21.5	21.6	22.0	22.5
	12H	20.4	20.7	20.9	21.2	21.7	21.1	21.4	21.6	21.9	22.4
12H	4H	20.6	21.0	21.0	21.4	21.9	21.3	21.7	21.7	22.2	22.6
	6H	20.4	20.8	20.9	21.3	21.8	21.2	21.5	21.6	22.0	22.5
	8H	20.4	20.7	20.9	21.2	21.7	21.1	21.4	21.6	21.9	22.4
Variations with the observer position at spacings:											
S = 1.0H		+ 2.9 / -16.5					+ 3.2 / -16.2				
1.5H		+ 4.8 / -12.3					+ 5.0 / -12.4				
2.0H		+ 6.7 / -15.3					+ 7.0 / -16.5				

CIE Pub.117, 1235 lm Total Lamp Luminous Flux Correct (8log(F/F0) = 0.7)

C Range: 0 - 360DEG
C Interval: 22.5DEG
Test Speed: HIGH
Temperature:28DEG
Operators:CJY
Test Date:2024-08-30

γ Range: 0 - 180DEG
γ Interval: 1.0DEG
Test System:EVERFINE GO-2000B_V1 SYSTEM V2.0.401
Humidity:65.0%
Test Distance:5.190m [K=1.0000]
Remarks:

TLO020-31-CCT 36V600mA TX-1825SW14A-2860V36-02H90 57.7D 3500K CRI90 N

UTILIZATION FACTORS TABLE

NAME: TLO020-31-CCT	TYPE: 57.7D	WEIGHT: 1
SPEC.: 3500K CRI90	DIM.:	SERIAL No.:
MFR.:	SUR.: 65	Shielding Angle:

REFLECTANCE										
Ceiling	0.8	0.8	0.8	0.7	0.7	0.7	0.5	0.5	0.5	0
Walls	0.7	0.5	0.3	0.7	0.5	0.3	0.7	0.5	0.3	0
Working plane	0.2	0.2	0.2	0.2	0.2	0.2	0.2	0.2	0.2	0
ROOM INDEX	UTILIZATION FACTORS (PERCENT) $k(RI) \times RCR = 5$									
$k = 0.60$	85	78	74	84	78	74	83	77	74	70
0.80	92	86	82	92	86	82	90	85	82	78
1.00	97	91	88	96	91	87	94	91	87	82
1.25	102	96	93	100	95	92	98	94	91	86
1.50	104	99	96	103	99	95	100	97	94	89
2.00	107	103	100	106	102	99	103	100	97	91
2.50	109	105	102	107	104	101	104	101	99	92
3.00	111	107	104	109	106	103	105	103	101	93
4.00	113	110	108	111	108	106	107	105	103	95
5.00	114	112	110	112	110	108	107	106	104	96
ROOM INDEX	UF (total)									Direct
According to DIN EN 13032-2 2004			Suspended					SHRNOM = 1.25		

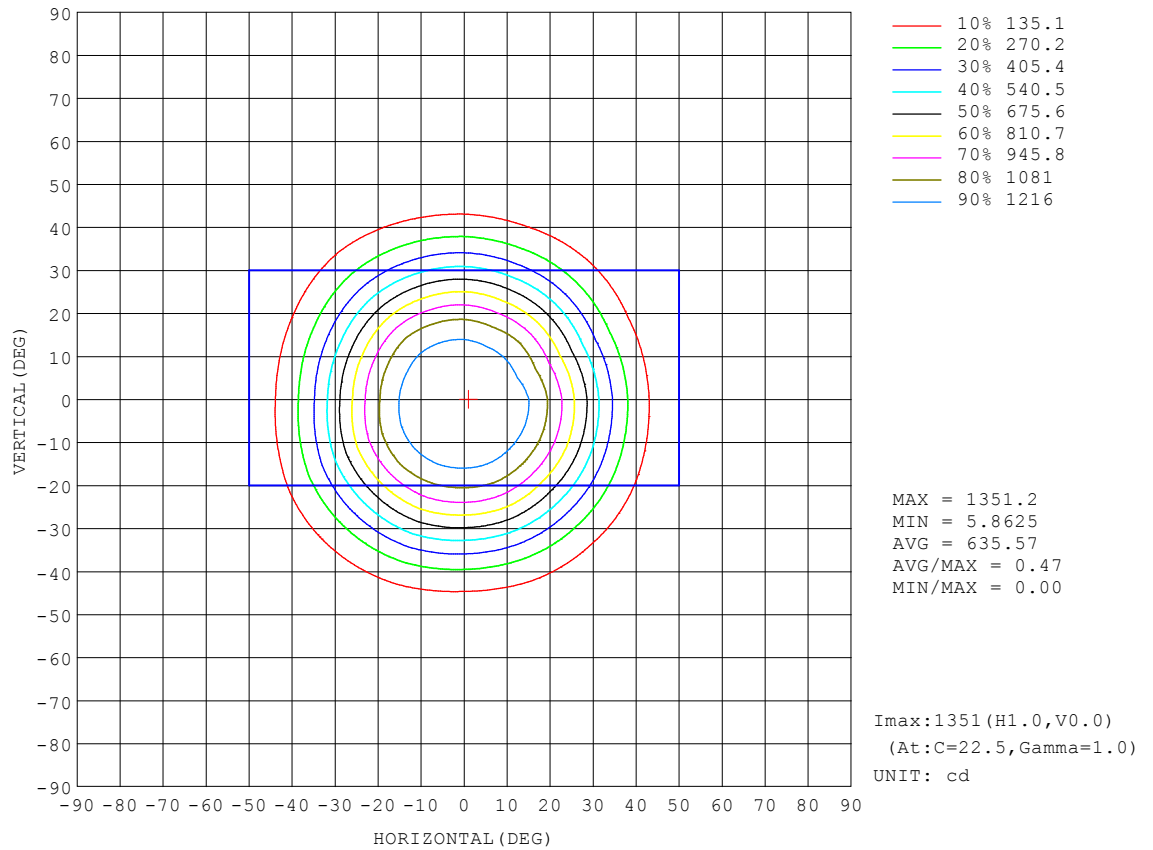
C Range: 0 - 360DEG
 C Interval: 22.5DEG
 Test Speed: HIGH
 Temperature: 28DEG
 Operators: CJY
 Test Date: 2024-08-30

γ Range: 0 - 180DEG
 γ Interval: 1.0DEG
 Test System: EVERFINE GO-2000B_V1 SYSTEM V2.0.401
 Humidity: 65.0%
 Test Distance: 5.190m [K=1.0000]
 Remarks:

TLO020-31-CCT 36V600mA TX-1825SW14A-2860V36-02H90 57.7D 3500K CRI90 NA

ISOCANDELA DIAGRAM

NAME: TLO020-31-CCT	TYPE: 57.7D	WEIGHT: 1
SPEC.: 3500K CRI90	DIM.:	SERIAL No.:
MFR.:	SUR.: 65	Shielding Angle:

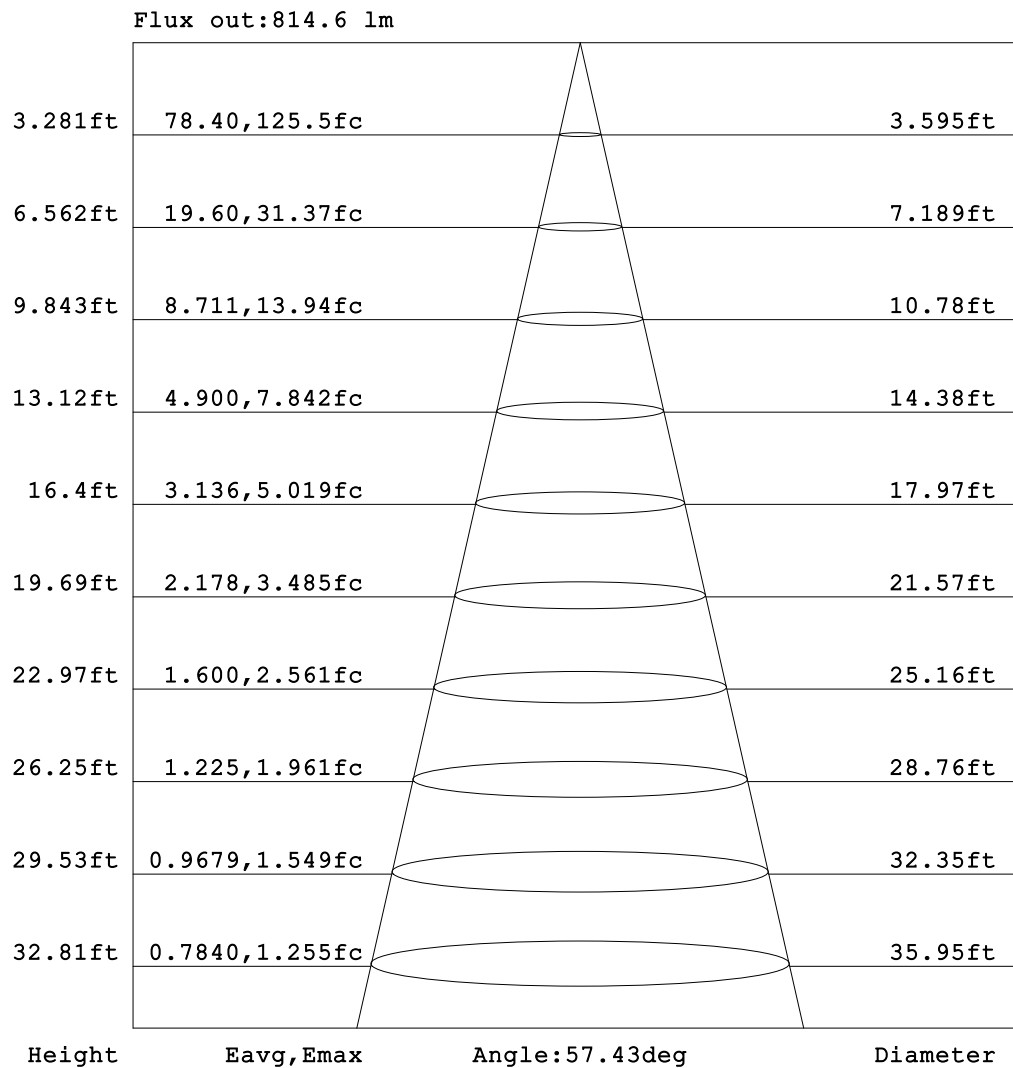


C Range: 0 - 360DEG
C Interval: 22.5DEG
Test Speed: HIGH
Temperature: 28DEG
Operators: CJY
Test Date: 2024-08-30

γ Range: 0 - 180DEG
γ Interval: 1.0DEG
Test System: EVERFINE GO-2000B_V1 SYSTEM V2.0.401
Humidity: 65.0%
Test Distance: 5.190m [K=1.0000]
Remarks:

AAI Figure

NAME: TLO020-31-CCT	TYPE: 57.7D	WEIGHT: 1
SPEC.: 3500K CRI90	DIM.:	SERIAL No.:
MFR.:	SUR.: 65	Shielding Angle:



Note: The Curves indicate the illuminated area and the average illumination when the luminaire is at different distance.

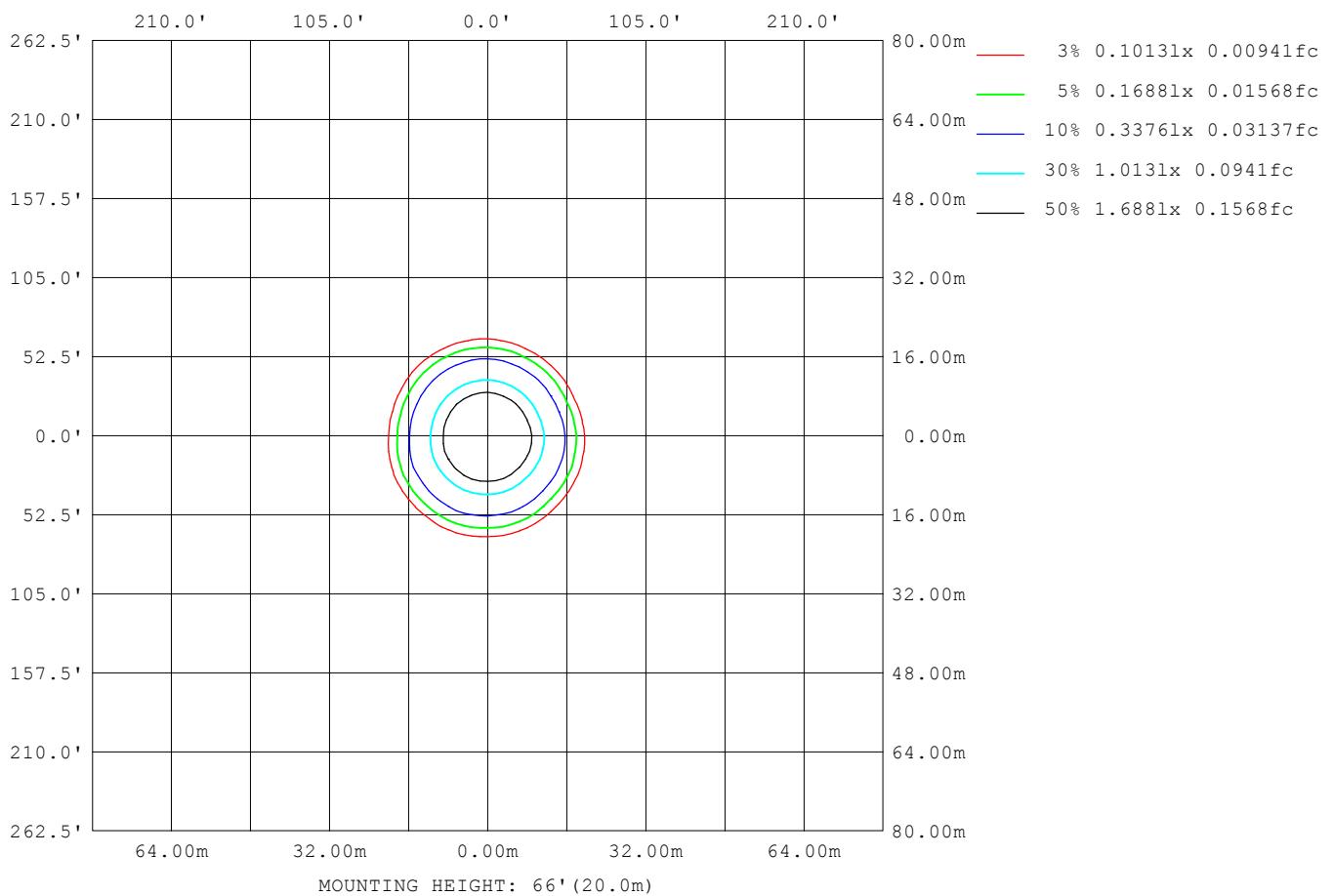
C Range: 0 - 360DEG
C Interval: 22.5DEG
Test Speed: HIGH
Temperature: 28DEG
Operators: CJY
Test Date: 2024-08-30

γ Range: 0 - 180DEG
γ Interval: 1.0DEG
Test System: EVERFINE GO-2000B_V1 SYSTEM V2.0.401
Humidity: 65.0%
Test Distance: 5.190m [K=1.0000]
Remarks:

TLO020-31-CCT 36V600mA TX-1825SW14A-2860V36-02H90 57.7D 3500K CRI90 N

ISOLUX DIAGRAM

NAME: TLO020-31-CCT	TYPE: 57.7D	WEIGHT: 1
SPEC.: 3500K CRI90	DIM.:	SERIAL No.:
MFR.:	SUR.: 65	Shielding Angle:



C Range: 0 - 360DEG
C Interval: 22.5DEG
Test Speed: HIGH
Temperature: 28DEG
Operators: CJY
Test Date: 2024-08-30

γ Range: 0 - 180DEG
γ Interval: 1.0DEG
Test System: EVERFINE GO-2000B_V1 SYSTEM V2.0.401
Humidity: 65.0%
Test Distance: 5.190m [K=1.0000]
Remarks:

LED Avg.L Report

NAME: TLO020-31-CCT	TYPE:57.7D	WEIGHT:1
SPEC.:3500K CRI90	DIM.:	SERIAL No.:
MFR.:	SUR.:65	Shielding Angle:

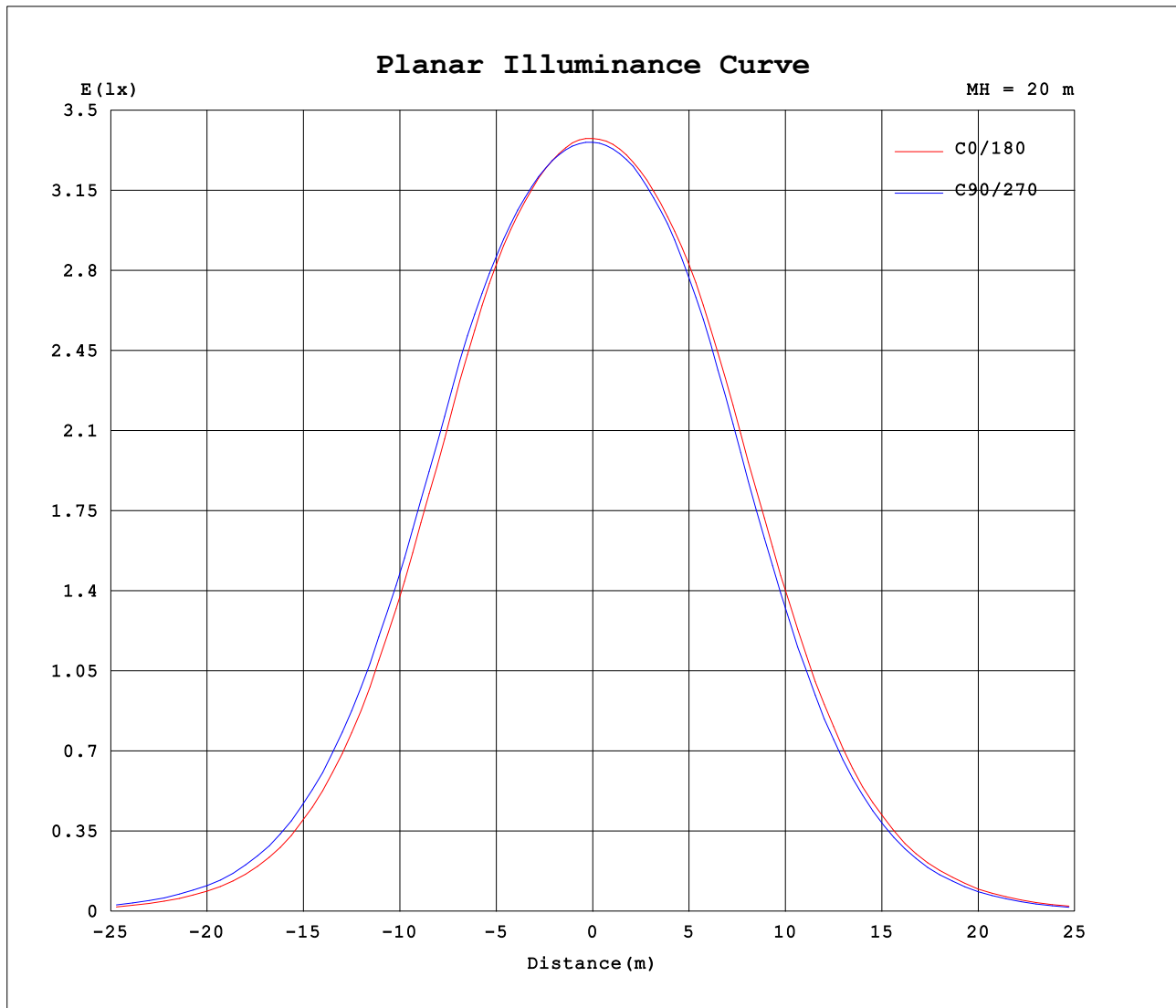
AvgL	cd/m2
L_0~180 (65) av	1256
L_0~180 (75) av	558
L_0~180 (85) av	886
L_90~270 (65) av	1178
L_90~270 (75) av	529
L_90~270 (85) av	890
L_45 (65) av	1226
L_45 (75) av	542
L_45 (85) av	875

Standard: GB/T 29293-2012

C Range: 0 - 360DEG
C Interval: 22.5DEG
Test Speed: HIGH
Temperature:28DEG
Operators:CJY
Test Date:2024-08-30

γ Range: 0 - 180DEG
γ Interval: 1.0DEG
Test System:EVERFINE GO-2000B_V1 SYSTEM V2.0.401
Humidity:65.0%
Test Distance:5.190m [K=1.0000]
Remarks:

Planar Illuminance Curve



C Range: 0 - 360DEG
 C Interval: 22.5DEG
 Test Speed: HIGH
 Temperature: 28DEG
 Operators: CJY
 Test Date: 2024-08-30

γ Range: 0 - 180DEG
 γ Interval: 1.0DEG
 Test System: EVERFINE GO-2000B_V1 SYSTEM V2.0.401
 Humidity: 65.0%
 Test Distance: 5.190m [K=1.0000]
 Remarks:

TLO020-31-CCT 36V600mA TX-1825SW14A-2860V36-02H90 57.7D 3500K CRI90 N2

LUMINOUS DISTRIBUTION INTENSITY DATA

NAME: TLO020-31-CCT	TYPE: 57.7D	WEIGHT: 1
SPEC.: 3500K CRI90	DIM.:	SERIAL No.:
MFR.:	SUR.: 65	Shielding Angle:

Table--1

UNIT: cd

C (DEG) γ (DEG)	0	22.5	45	67.5	90	112.5	135	157.5	180	202.5	225	247.5	270	292.5	315	337.5			
0	1345	1345	1345	1345	1345	1345	1345	1345	1345	1345	1345	1345	1345	1345	1345	1345			
5	1334	1336	1337	1339	1338	1339	1338	1338	1332	1330	1331	1329	1330	1329	1328	1327			
10	1293	1299	1301	1305	1306	1310	1308	1305	1291	1289	1288	1285	1284	1277	1279	1276			
15	1213	1221	1226	1233	1238	1243	1241	1237	1214	1206	1208	1198	1191	1176	1185	1180			
20	1052	1070	1081	1099	1102	1111	1120	1106	1061	1057	1063	1038	1027	1006	1016	1008			
25	839	860	863	892	898	917	911	908	853	841	840	821	813	788	791	788			
30	602	625	626	657	667	688	677	676	616	606	607	592	582	557	557	549			
35	383	399	408	432	442	462	450	447	395	387	390	379	370	347	343	338			
40	210	220	224	244	255	271	264	260	224	219	222	213	206	188	183	179			
45	100	107	111	126	128	140	136	136	111	108	110	104	98.2	88.5	85.3	83.6			
50	40.4	43.5	45.1	51.5	57.0	60.0	57.9	56.5	45.7	43.7	44.2	40.9	38.3	33.4	32.0	31.0			
55	11.6	12.3	12.1	14.1	15.5	18.7	17.3	18.0	13.6	12.5	12.5	11.1	10.3	8.69	8.62	8.26			
60	2.97	3.04	2.96	3.39	3.76	4.51	4.47	4.69	3.53	3.16	3.09	2.66	2.41	2.19	2.32	2.35			
65	1.30	1.33	1.31	1.44	1.47	1.62	1.62	1.69	1.41	1.33	1.31	1.15	1.07	1.01	1.05	1.08			
70	0.71	0.72	0.72	0.75	0.79	0.86	0.86	0.88	0.73	0.71	0.70	0.64	0.58	0.55	0.54	0.56			
75	0.38	0.37	0.36	0.39	0.41	0.43	0.46	0.45	0.36	0.36	0.34	0.33	0.29	0.28	0.27	0.29			
80	0.26	0.23	0.24	0.24	0.26	0.25	0.27	0.25	0.20	0.22	0.20	0.21	0.18	0.20	0.17	0.20			
85	0.22	0.22	0.22	0.22	0.22	0.21	0.23	0.22	0.17	0.18	0.17	0.18	0.17	0.17	0.16	0.17			
90	0.23	0.24	0.21	0.23	0.21	0.22	0.21	0.22	0.19	0.17	0.19	0.17	0.20	0.18	0.20	0.17			
95	0.29	0.30	0.29	0.29	0.27	0.28	0.25	0.27	0.24	0.22	0.24	0.23	0.26	0.25	0.26	0.25			
100	0.44	0.44	0.43	0.43	0.40	0.39	0.38	0.39	0.36	0.35	0.37	0.38	0.41	0.42	0.42	0.40			
105	0.72	0.71	0.71	0.69	0.66	0.63	0.61	0.61	0.60	0.61	0.63	0.66	0.70	0.73	0.72	0.71			
110	1.20	1.17	1.18	1.14	1.11	1.04	1.03	1.00	1.01	1.06	1.07	1.14	1.17	1.24	1.22	1.21			
115	1.93	1.87	1.89	1.82	1.79	1.69	1.68	1.64	1.67	1.74	1.75	1.86	1.90	1.99	1.95	1.95			
120	2.92	2.85	2.88	2.77	2.73	2.59	2.61	2.54	2.58	2.70	2.71	2.85	2.90	3.01	2.96	2.97			
125	4.17	4.09	4.12	3.99	3.93	3.76	3.79	3.71	3.80	3.91	3.94	4.09	4.17	4.29	4.25	4.24			
130	5.61	5.52	5.54	5.40	5.34	5.17	5.17	5.12	5.23	5.31	5.38	5.53	5.63	5.74	5.71	5.67			
135	7.19	7.09	7.10	6.96	6.88	6.72	6.70	6.68	6.80	6.88	6.95	7.08	7.21	7.29	7.29	7.21			
140	8.79	8.68	8.69	8.56	8.49	8.34	8.31	8.31	8.43	8.52	8.56	8.70	8.79	8.89	8.85	8.81			
145	10.3	10.2	10.2	10.1	10.1	9.90	9.92	9.89	9.98	10.1	10.1	10.3	10.3	10.4	10.3	10.3			
150	11.6	11.5	11.6	11.5	11.5	11.3	11.3	11.3	11.3	11.4	11.5	11.6	11.6	11.7	11.6	11.5			
155	12.6	12.6	12.7	12.7	12.7	12.5	12.5	12.5	12.4	12.5	12.6	12.7	12.7	12.7	12.6	12.4			
160	13.4	13.3	13.4	13.5	13.5	13.4	13.3	13.3	13.3	13.3	13.4	13.5	13.6	13.5	13.3	13.1			
165	14.0	13.9	14.1	14.2	14.3	14.1	14.0	14.0	14.0	14.0	14.1	14.2	14.2	14.1	13.9	13.8			
170	14.6	14.6	14.6	14.8	14.8	14.7	14.7	14.7	14.7	14.7	14.7	14.7	14.7	14.7	14.5	14.4			
175	15.2	15.2	15.3	15.3	15.3	15.3	15.3	15.3	15.3	15.4	15.5	15.4	15.3	15.3	15.3	15.0			
180	15.6	15.6	15.7	15.7	15.7	15.6	15.7	15.5	15.6	15.6	15.7	15.7	15.7	15.6	15.7	15.5			

C Range: 0 - 360DEG
C Interval: 22.5DEG
Test Speed: HIGH
Temperature: 28DEG
Operators: CJY
Test Date: 2024-08-30

γ Range: 0 - 180DEG
γ Interval: 1.0DEG
Test System: EVERFINE GO-2000B_V1 SYSTEM V2.0.401
Humidity: 65.0%
Test Distance: 5.190m [K=1.0000]
Remarks: